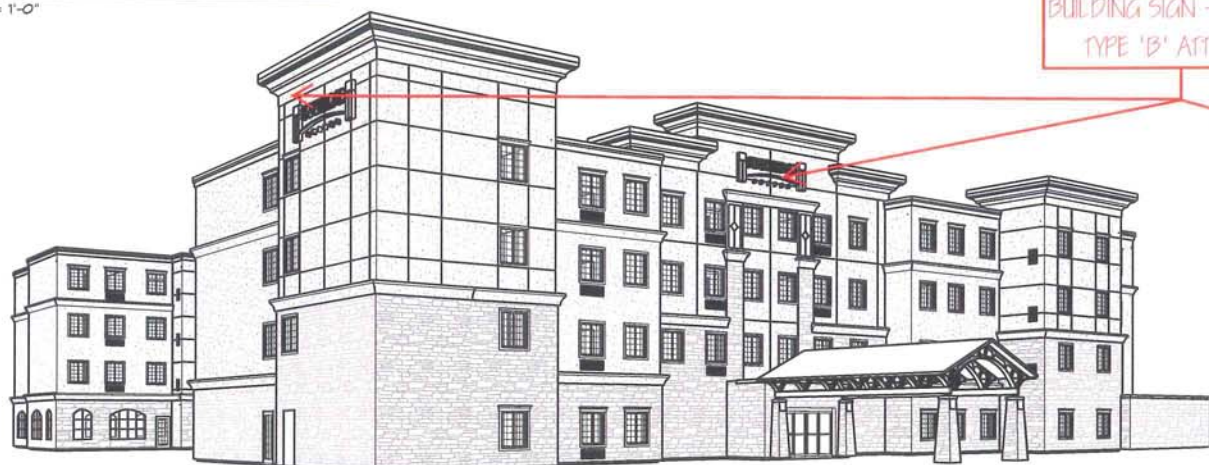




1 3D VIEW - SOUTH EAST
A5 12" = 1'-0"

BUILDING SIGN - SEE SIGN
TYPE 'B' ATTACHED

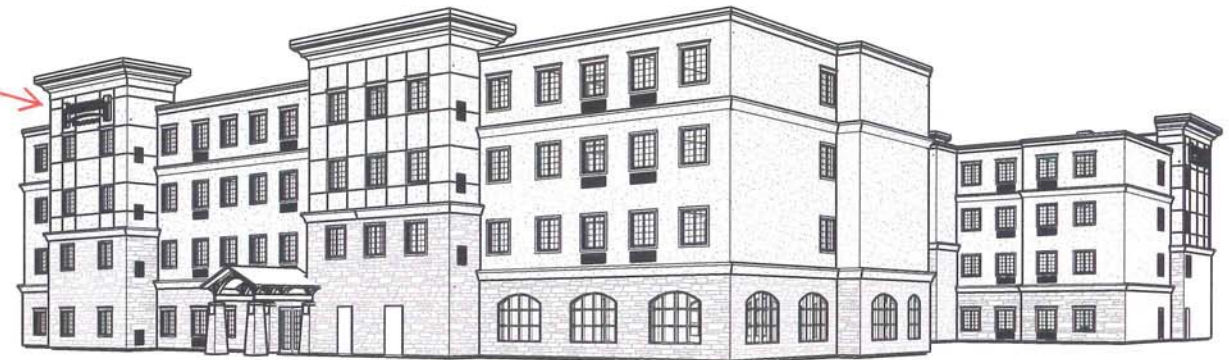


2 3D VIEW - SOUTH WEST
A5

BUILDING SIGN - SEE SIGN
TYPE 'B' ATTACHED



4 3D VIEW - NORTH EAST
A5



3 3D VIEW - NORTH WEST
A5



5 3D VIEW - COURTYARD
A5